



Shop.USATO
This Week's
Deals!!

- Home
- News
- Main Categories
- Washington
- States
- World
- Editorial/Opinion
- News Briefs
- Top News
- Nation
- World
- Washington
- Offbeat
- More News
- Health
- Science
- Census
- Politics
- Supreme Court
- Columnists
- Lotteries
- City Guides
- Talk Today
- Money
- Sports
- Life
- Tech
- Weather

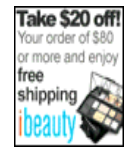
USATODAY.com
Census 2000

03/25/2001 - Updated 11:39 PM ET
How segregation is measured

Hispanics became the largest minority group in 16 metro areas in the 1990s, according to population numbers released by the Census Bureau for 41 states so far. In 11 of the metro areas, Hispanics have become increasingly segregated from non-Hispanic whites. John Logan, a sociologist at the University at Albany who has studied segregation for 30 years, is using two measures of how segregated Hispanics are within those metro areas.

- **The segregation index** is a common measure that has been in use for 80 years. It shows the percentage of Hispanics who would have to move to less-Hispanic neighborhoods to be fully integrated with non-Hispanic whites. The higher the index, the greater the segregation. For example, New York's segregation index of 68.9 means that 68.9% of Hispanics in the metro area would have to move to less-Hispanic neighborhoods to be fully integrated with whites. In 1990, there was less segregation: 66% would have had to move.
- **The isolation index** shows the percentage of Hispanics in neighborhoods where the average Hispanic lives. The isolation index of 48.2 in New York means the average Hispanic lives in a neighborhood that's 48.2% Hispanic. In 1990, the average Hispanic lived in a neighborhood that was 43.8% Hispanic. For the complete methodology, go to www.albany.edu/mumford/census

| Metro area | Percentage Hispanic | | White-Hispanic Segregation Index | | Hispanic Isolation Index | |
|-----------------------------|---------------------|-------|----------------------------------|------|--------------------------|------|
| | 1990 | 2000 | 1990 | 2000 | 1990 | 2000 |
| | New York | 21.6% | 25.1% | 65.9 | 68.9 | 43.8 |
| Dallas | 13.6% | 23.0% | 50.6 | 56.5 | 32.6 | 46.4 |
| Galveston-Texas City, Texas | 14.0% | 18.0% | 33.5 | 34.8 | 19.7 | 24.6 |
| Waco, Texas | 12.2% | 17.9% | 44.3 | 49.0 | 23.7 | 33.2 |



\$20 OFF
Celebrate spring
Take \$20 off
your order of \$80
or more
at
ibeauty.com



Cooking.com
Clearance
Save up to 75% off
on great kitchen
essentials
cookware



\$6 OFF
Place an order
today at
Gardener's
Supply Company
and receive
\$6 off and \$5
purchase

For Other
Deals
Click Here

| | | | | | | |
|--------------------------------|------|-------|------|------|------|------|
| Bridgeport, Conn. | 9.6% | 12.4% | 68.5 | 67.0 | 32.3 | 32.7 |
| Wichita Falls, Texas | 8.1% | 11.8% | 40.2 | 38.6 | 15.9 | 20.3 |
| Stamford-Norwalk, Conn. | 7.1% | 10.8% | 47.7 | 56.6 | 14.1 | 23.7 |
| Nassau-Suffolk, N.Y. | 6.0% | 10.3% | 43.3 | 49.7 | 15.2 | 24.7 |
| Elkhart-Goshen, Ind. | 1.8% | 8.9% | 41.9 | 51.6 | 3.9 | 20.3 |
| Sherman-Denison, Texas | 2.6% | 6.8% | 36.6 | 40.3 | 4.6 | 13.8 |
| Lafayette-West Lafayette, Ind. | 1.4% | 5.6% | 38.8 | 43.1 | 2.7 | 13.5 |
| Fort Smith, Ark.-Okla. | 0.9% | 4.9% | 41.1 | 51.6 | 3.9 | 12.9 |
| Enid, Okla. | 1.6% | 4.1% | 23.1 | 38.7 | 3.0 | 7.3 |
| Lincoln, Neb. | 1.6% | 3.4% | 39.4 | 37.3 | 3.2 | 6.9 |
| Joplin, Mo. | 0.6% | 3.0% | 52.3 | 39.5 | 2.4 | 10.5 |
| Sioux Falls, S.D. | 0.5% | 1.9% | 45.1 | 43.7 | 1.1 | 4.5 |

Source: Prepared by Lewis Mumford Center, University at Albany, N.Y.



LOOK WHO'S TALKING THIS WEEK...

[CLICK HERE TO CHAT](#)

● **Rikdi Rockett** ● **Sleep Hotline** ● **Fantasy Baseball**



[Front Page](#) [News](#) [Money](#) [Sports](#) [Life](#) [Tech](#) [Weather](#) [Shop](#)
[Terms of service](#) [Privacy Policy](#) [How to advertise](#)
 © Copyright 2001 USA TODAY, a division of Gannett Co. Inc.